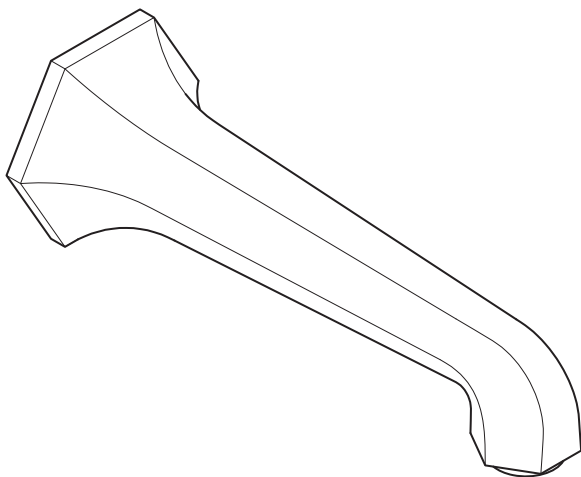


2200 / 2210 / 4125 / 4135
WALL MOUNTED BASIN & BATH SPOUTS
INSTALLATION GUIDE



LEFROY BROOKS

IMPORTANT INFORMATION

Professional installation

We recommend that our products are fitted by a fully qualified professional plumber. They should be installed correctly and in accordance with all local water regulations and the system protected by non-return valves (not supplied). All products should be accessible for routine servicing.

Suits all systems

This Lefroy Brooks product is potentially suitable for every possible application, type of boiler and water supply pressure. However, if your supply pressure is below 1 bar it is advisable to fit a water pump. For systems with combination boilers, it is not advisable to fit pumps (refer to boiler manufacturer).

Supply temperature safety notice

A thermostatic mixing valve (TMV) should be fitted (not supplied) to the hot supply to restrict the temperature to a safe working/maximum temperature to comply with local building regulations, current legislation, relevant standards and codes of practice. Maximum allowed temperatures vary subject to type of installation or specification of building.

Flushing system

It is most important to flush out all pipework thoroughly before connecting the product. Failure to do so may block aerators and reduce or prevent water flow.

Supply connections

Lefroy Brooks do not supply any pipework or connections for the spouts. The threaded spout tails can be cut to length to suit the available cavity and connected to the water supplies using a standard tee connection.

Balancing flow

When using wall valves as separate hot and cold supplies, if a significant difference in pressure exists, we advise fitting a 'flow regulator' (not supplied) to the higher or both supplies.

Servicing

Suitable access should be available to aid any future maintenance/servicing. Installing isolation valves will make servicing much easier (not supplied).

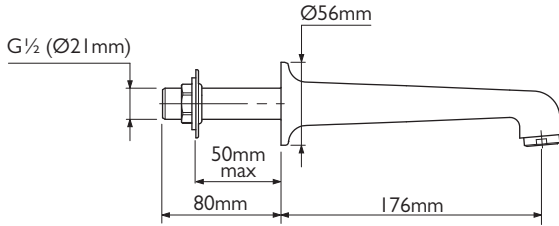
All serviceable parts are available to maintain your Lefroy Brooks product (contact retailer for details).

Water quality

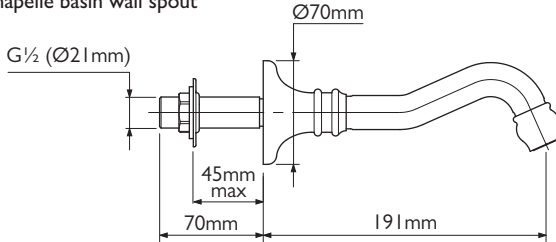
In hard water areas a suitable water treatment system should be provided to prevent limescale deposits (calcium deposits). Exterior surfaces should be gently wiped with a dry soft cloth after use to minimise water stains and limescale deposits.

BASIN SPOUT DIMENSIONS

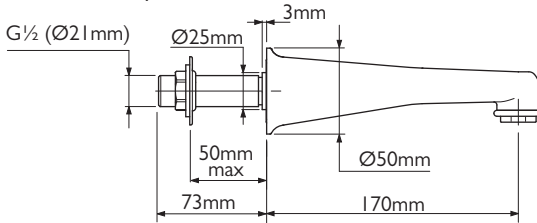
LB 2200 – Classic basin wall spout



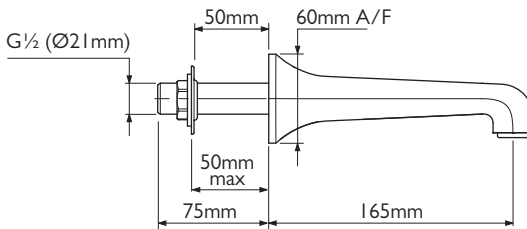
FR 2200 – La Chapelle basin wall spout



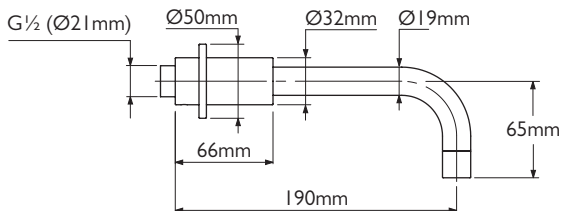
JM 2200 – Janey Mac basin wall spout



MK 2200 – Mackintosh basin wall spout



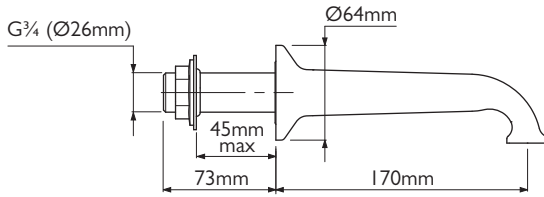
XO 4135 & TT 4135 – Zu basin wall spout



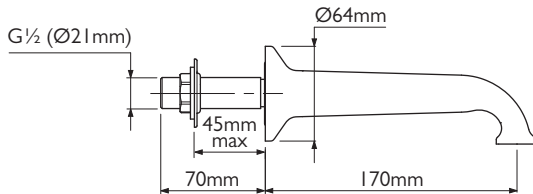
Not to scale

BATH SPOUT DIMENSIONS

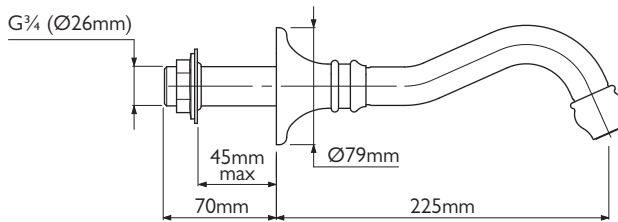
LB 2210 – Classic bath wall spout



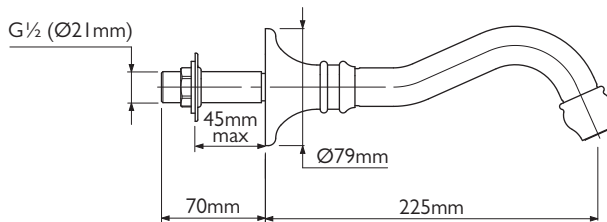
LBE 2210 – Classic bath wall spout



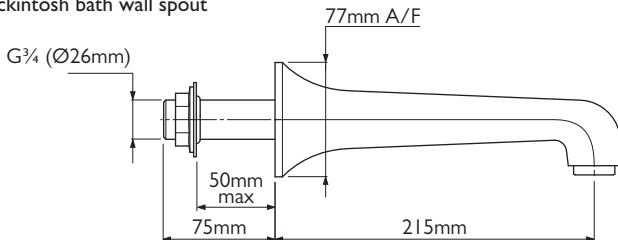
FR 2210 – La Chapelle bath wall spout



FRE 2210 – La Chapelle bath wall spout



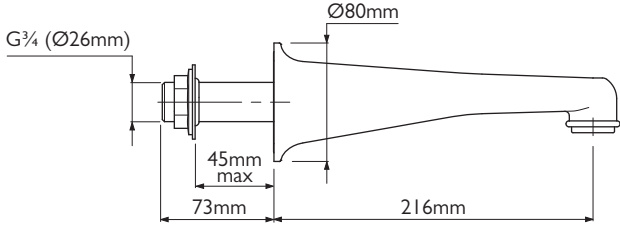
MK 2210 – Mackintosh bath wall spout



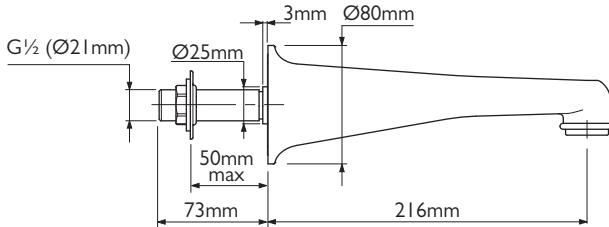
Not to scale

BATH SPOUT DIMENSIONS

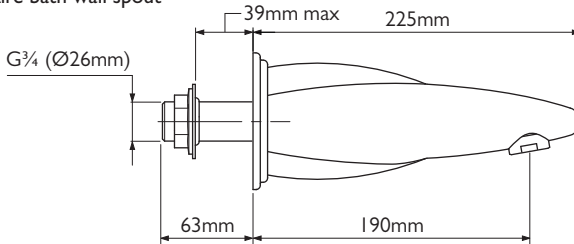
JM 2210 – Janey Mac bath wall spout



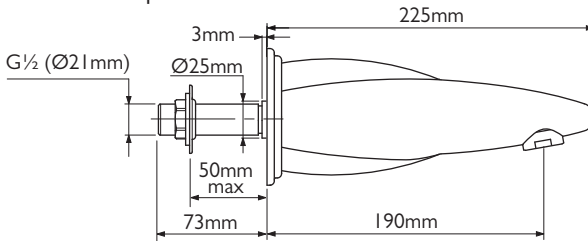
JME 2210 – Janey Mac bath wall spout



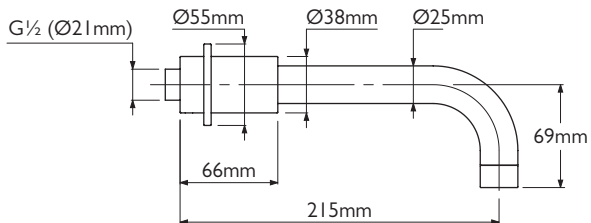
RT 2210 – Belle Aire bath wall spout



RTE 2210 – Belle Aire bath wall spout



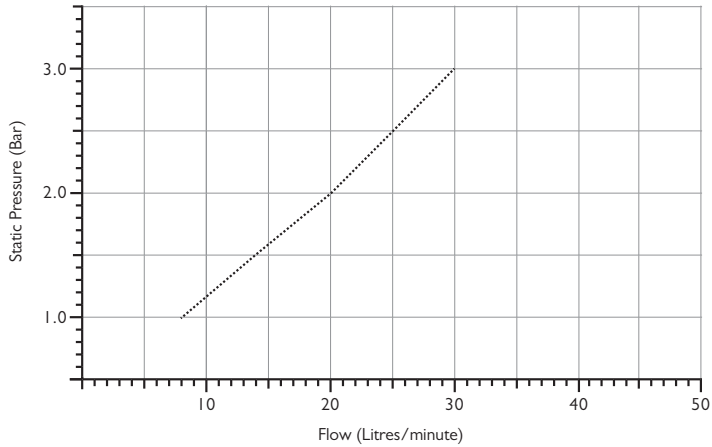
XO 4125 & TT 4125 – Zu bath wall spout



Not to scale

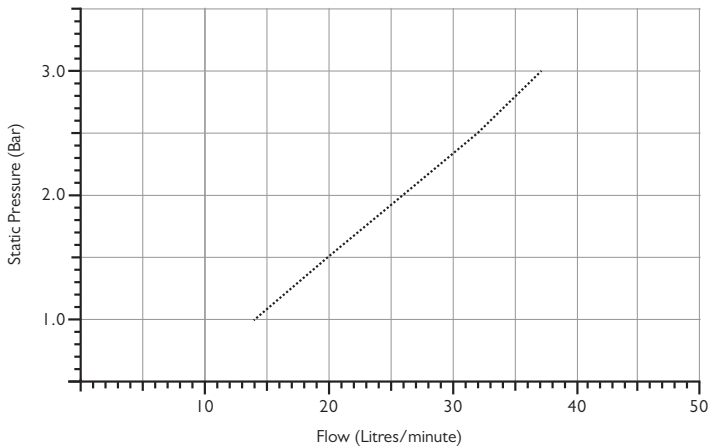
TYPICAL FLOW RATES

LB 2220 & JM 2200 basin wall spouts



Note: Balanced pressures shown are applied directly to the hot and cold inlets; flow rates indicated are free flowing and may vary subject to restrictions created by installation, pipework, layout or application.

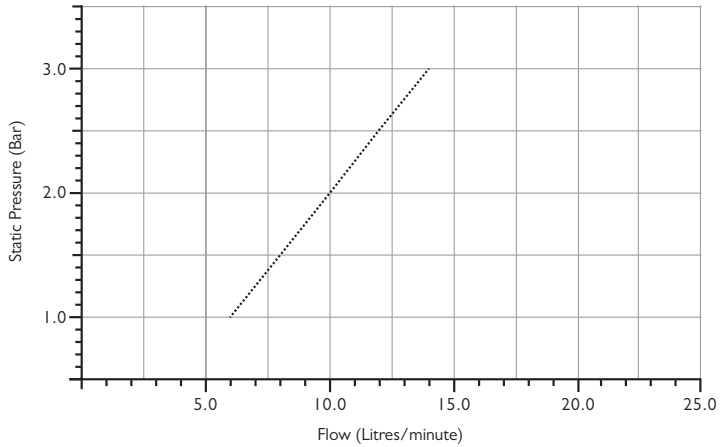
FR 2220 basin wall spout



Note: Balanced pressures shown are applied directly to the hot and cold inlets; flow rates indicated are free flowing and may vary subject to restrictions created by installation, pipework, layout or application.

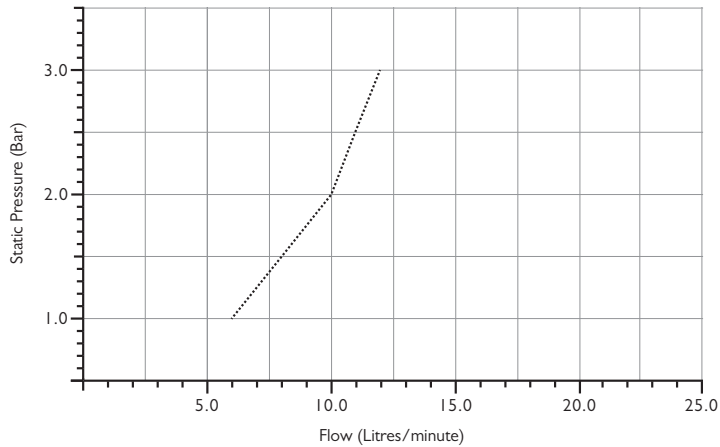
TYPICAL FLOW RATES

MK 2200 basin wall spout



Note: Balanced pressures shown are applied directly to the hot and cold inlets; flow rates indicated are free flowing and may vary subject to restrictions created by installation, pipework, layout or application.

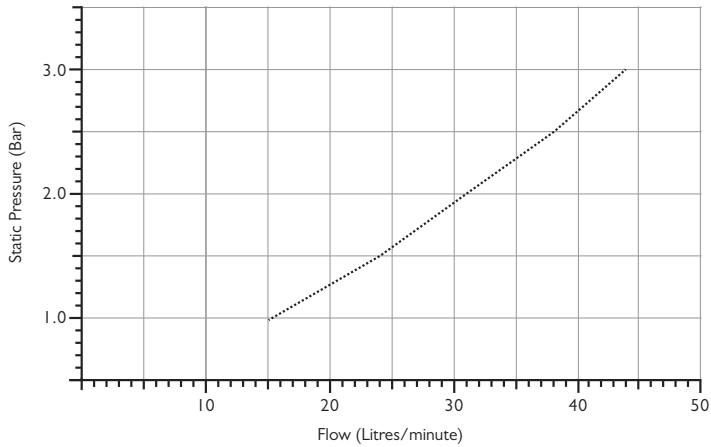
TT 4135 & XO 4135 basin wall spout



Note: Balanced pressures shown are applied directly to the hot and cold inlets; flow rates indicated are free flowing and may vary subject to restrictions created by installation, pipework, layout or application.

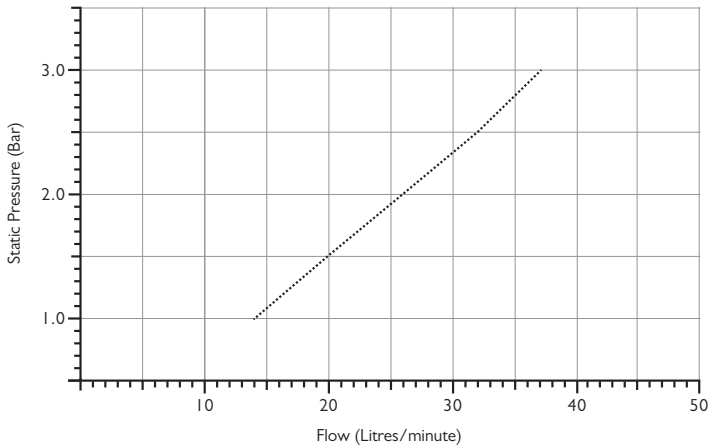
TYPICAL FLOW RATES

LB 2210, LBE 2210, MK 2210, TT 4125 & XO 4125 bath wall spouts



Note: Balanced pressures shown are applied directly to the hot and cold inlets; flow rates indicated are free flowing and may vary subject to restrictions created by installation, pipework, layout or application.

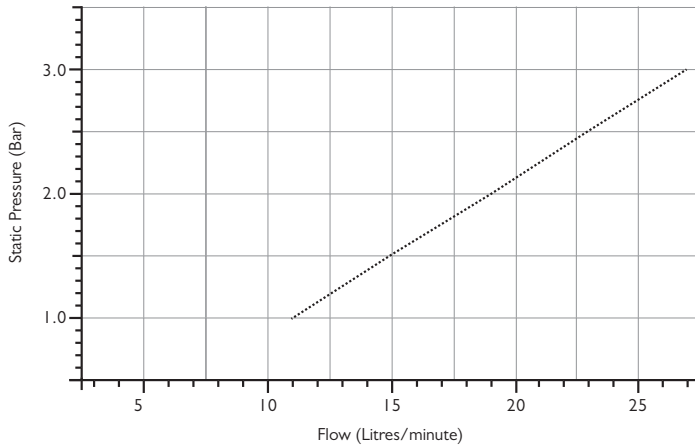
FR 2210 & FRE 2210 bath wall spouts



Note: Balanced pressures shown are applied directly to the hot and cold inlets; flow rates indicated are free flowing and may vary subject to restrictions created by installation, pipework, layout or application.

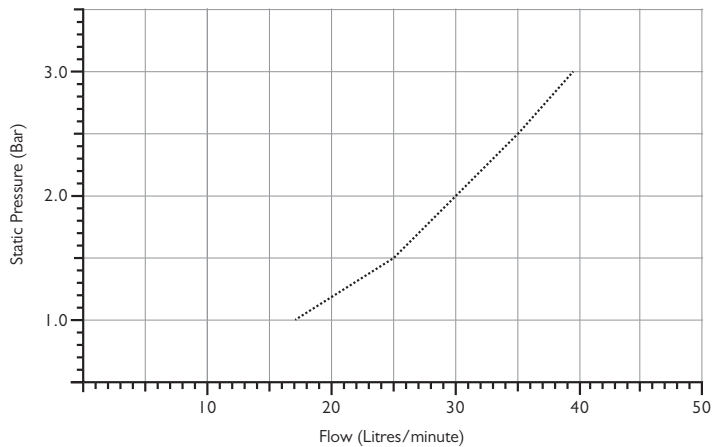
TYPICAL FLOW RATES

JM 2210 & JME 2210 bath wall spouts



Note: Balanced pressures shown are applied directly to the hot and cold inlets; flow rates indicated are free flowing and may vary subject to restrictions created by installation, pipework, layout or application.

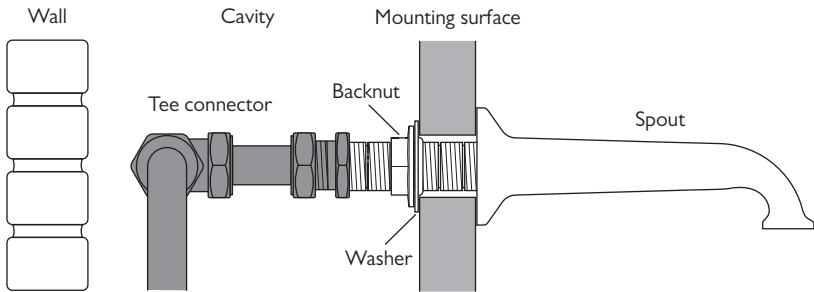
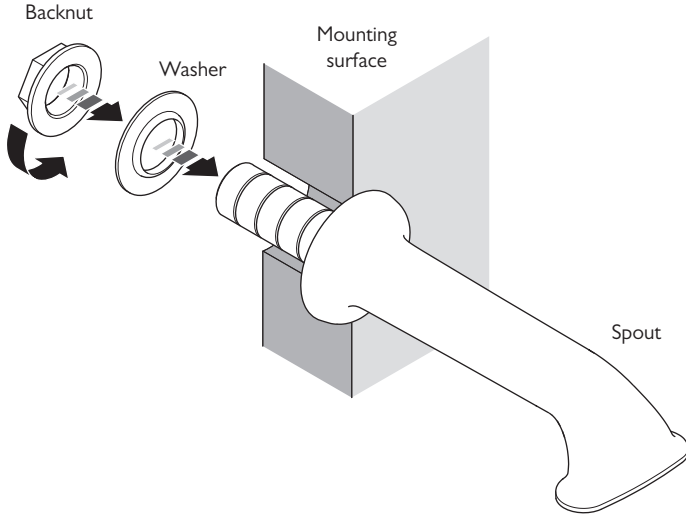
RT 2210 & RTE 2210 bath wall spouts



Note: Balanced pressures shown are applied directly to the hot and cold inlets; flow rates indicated are free flowing and may vary subject to restrictions created by installation, pipework, layout or application.

INSTALLATION

(All models except TT 4125, TT 4135, XO 4125 & XO 4135)

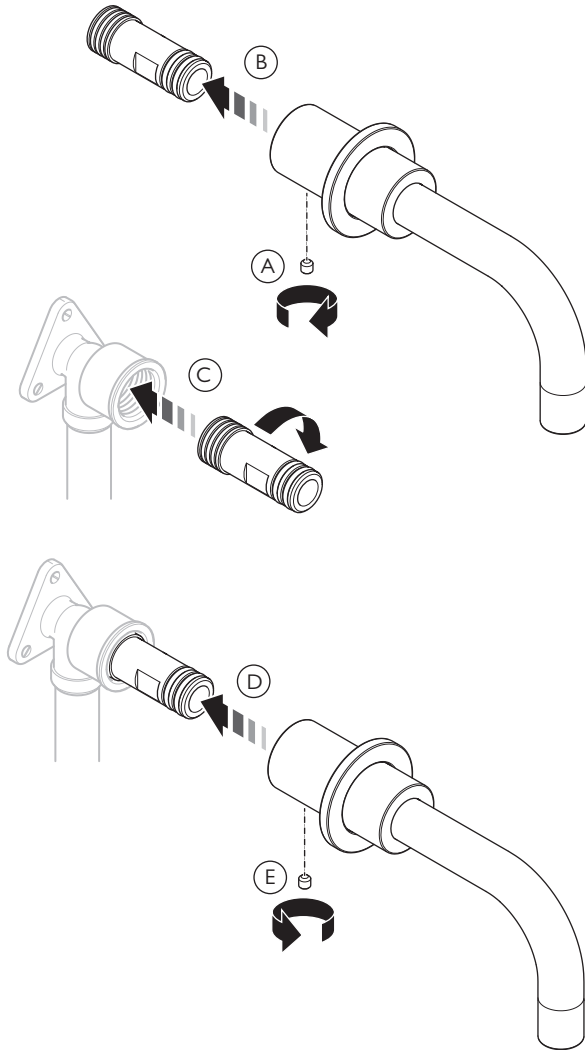


Spouts are not suitable for solid walls.

- 1 Drill a suitable sized hole through the mounting surface.
- 2 Insert the spout tail through the opening in the mounting surface.
- 3 Locate the washer on to the spout tail.
- 4 Screw the backnut on to the spout tail.

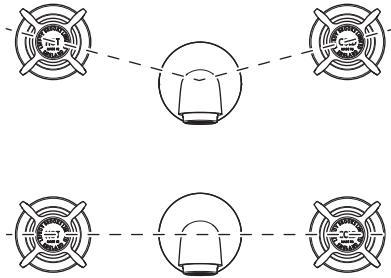
INSTALLATION

TT 4125, TT 4135, XO 4125 & XO 4135 only



- 1 Unscrew and remove the grub screw from the base of the spout using the supplied 2.5mm hexagonal key (A).
- 2 Pull the wall adapter clear of the spout body (B).
- 3 Apply suitable sealing compound/tape to the thread of the wall adapter and screw into a suitable female wall fitting (C).
- 4 Gently push the spout onto the wall adapter (D) then fit the grub screw to secure (E).

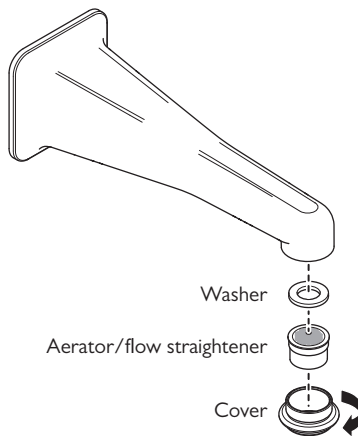
TYPICAL LAYOUT



There are no regulations specifying the position between spout and valves.
They can be installed as required.

SERVICING – CLEANING THE AERATOR/FLOW STRAIGHTENER

Shown with Janey Mac bath spout.
The same procedure applies to all models fitted with aerators/flow straighteners.
Not applicable to Classic bath spout (LB 2210).



- 1 There is an aerator/flow straightener located in the end of the spout. To remove this unscrew and remove the cover.
- 2 The aerator/flow straightener can be cleaned in warm soapy water.
- 3 Assemble in the reverse order.

REPLACEMENT AERATORS/FLOW STRAIGHTENERS

Belle Aire Bath – PSH032

Classic Basin – PSH030

Classic Bath – None fitted

La Chapelle Basin – PSH034

La Chapelle Bath – PSH035

Janey Mac Basin – PSHI08

Janey Mac Bath – PSHI27

Mackintosh Basin – PSH029

Mackintosh Bath – PSH032

XO & TT Basin – PXT029

XO & TT Bath – PXT030



CONTRACT ENQUIRIES

+44 (0)1992 708 316

info@lefroybrooks.co.uk

CUSTOMER SERVICE, SPARES & TECHNICAL ENQUIRIES

+44 (0)1902 390 894

technical@lefroybrooks.co.uk

LEFROYBROOKS.CO.UK

Whilst every effort is made to ensure the accuracy of these, they are subject to change without notice as part of the company's product development process. The use of trademarks, product design and artwork is subject to licence or agreement with LBIP Ltd. The design registrations, trademark registrations and copyrights are protected by law and the use or reproduction outside the terms of an agreement is prohibited. The right to modify designs and dimensions is reserved. LBIP Ltd is a member of ACID (Anti Copying in Design). E&OE